



# One year, one story



I would like to thank the entire team for their dedication and devotion to our patients. I am deeply impressed.

Prof. Ruedi Lüthy, founder of the Foundation and Newlands Clinic



**Sabine Lüthy:** Disinfect your hands! Last year Newlands Clinic was quick to adopt the global hygiene protocol as part of its daily routine. Anyone entering the clinic has to undergo a health check first. In conjunction with all the other safety measures, the strict hygiene regime has paid off. So far, not one infection with the coronavirus occurred on the clinic site. However, given the extremely cramped homes in which people live, few are able to protect themselves sufficiently. With lives dominated by day-to-day worries such as hunger and domestic strife, the pandemic is another major burden in extremely precarious circumstances. The lockdown measures also brought informal commerce partially to a standstill, depriving many people of a living. There is only very limited medical assistance available to anyone contracting Covid-19, as few people can afford treatment or a stay in hospital. So, we are particularly happy to report that Newlands Clinic was always able to provide basic medical care. This is so important because an interruption in therapy can lead to an outbreak of disease or dangerous resistance. So far, we have managed to accompany our patients safely through this

difficult time, and we will continue to master these challenges in the months to come. This is only possible thanks to you, our partners, donors, and friends.

For your trust and highly appreciated support, I thank you from the bottom of my heart.

**Ruedi Lüthy:** What impressed me most last year was the great solidarity among members of the Newlands Clinic team. Just like in Switzerland, the Covid-19 pandemic required continuous adaptations to keep abreast of the situation in Zimbabwe, and there was a great deal of uncertainty. Will case numbers continue to increase? What measures is the government going to take next? Despite all this uncertainty, our team was undaunted. Even getting to work was difficult: to reach the clinic on time, many had to leave home much earlier, negotiate roadblocks and take detours. Daily routines and all the procedures at the clinic had to be adjusted frequently. There were also major changes in terms of contact with patients. Face-to-face conversations are an extremely important part of providing treatment and support. However, consultations were kept to a minimum, which shortened the crucial exchange between patients and nurses. And each one of them made a huge effort to go the extra mile for their patients. Despite these difficult circumstances, the viral load in 97 % of our patients has remained undetectable by UNAIDS criteria. That is a sensational achievement!

For over a year, the Covid-19 pandemic prevented me from traveling to Harare. I missed the team greatly. On the other hand, it was reassuring that Newlands Clinic continued to function extremely well without my presence.

I would like to thank the entire team for their dedication and devotion to our patients. I am deeply impressed.



# Getting through the pandemic with courage and creativity

The coronavirus pandemic has also hit people in Zimbabwe very hard and has at times had a major effect on our work. Even so, our dedicated clinic team has always been able to find solutions to keep up the usual standards of treatment and care for our patients.

There is still a great need for effective HIV treatment in Zimbabwe. According to UNAIDS figures of 2019, around 13 % of people between 15 and 49 are HIV-positive, with some 20,000 deaths and more than 30,000 new infections every year. For comparison: 421 people were diagnosed with HIV in Switzerland in 2019 according to the Federal Office of Public Health. Our Newlands Clinic continued to grow in 2020: at the end of December, it had 7,003 patients, almost 300 (+4 %) more than the year before. Around two-thirds are female, and just under a quarter is aged below 25.

## Successful treatment despite the lockdown

Even though the pandemic posed major challenges for the clinic team (see pages 8 to 11), we were able to maintain a high standard of HIV treatment. Ninety-seven per cent of patients who have been treated with antiretro-

viral drugs at Newlands Clinic for at least six months have a suppressed viral load according to the UNAIDS criteria. This figure is higher for adults than for young people up to age 24 (98 % vs 93 %). For this reason, providing particularly close support to children and young people remains a key priority for the clinic team. The figures for patients lost to follow-up, and mortality, are also important indicators of treatment success. Only 51 patients (0.7 %) were lost to follow-up in 2020. The most frequent cause of death among the 77 patients who died (1.1 %) was cancer. Most of them only sought our help once the disease was too far advanced.

## Identifying and treating sequelae in time

People with an HIV infection are at an elevated risk of getting cancer – especially cervical cancer among women – and opportunistic infections such as tuberculosis (TB). For this reason, TB prevention and regular check-ups to prevent cervical cancer are an integral part of care. Precancerous conditions of the cervix can be diagnosed and treated directly at our Women's Health Centre. In the year under review, 219 of the 2,665 women screened required treatment, four of them suffering from cervical cancer. If possible, we also support patients diagnosed with cancer financially so that they can get medical help at a specialised clinic. We diagnose and treat

other HPV-related diseases of the genital area and sexually transmitted infections on site at Newlands Clinic.

## Psychosocial support also available remotely

The pandemic has created major difficulties for our patients, who already live in precarious circumstances. The lockdown made travelling to the clinic considerably more difficult for a lot of people, and many have lost their entire means of earning a living by selling goods or services. Children and young people were also particularly hard hit because schools closed in the second half of the year. Besides the danger of falling behind in their education, they were at a greater risk of falling victim to abuse and violence. In 2020 around 550 patients needed psychological support. Sessions took place either on site (with the necessary precautions) or by phone. We had to put group therapy on hold, and we won't be able to complete the 2020 vocational skills training programme until 2021. ➤



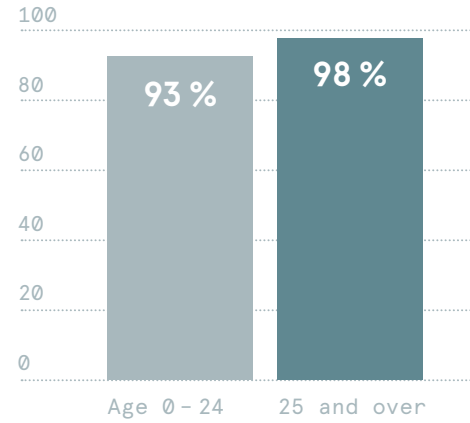
“Uninterrupted provision of all patients with their medicines in the face of travel restrictions and interruptions of the supply chain is a great achievement of the team.”

PD Dr. med. Stefan Zimmerli,  
Medical Coordinator

## HIV treatment



### Suppression Rate (UNAIDS criteria)



### Successful treatment

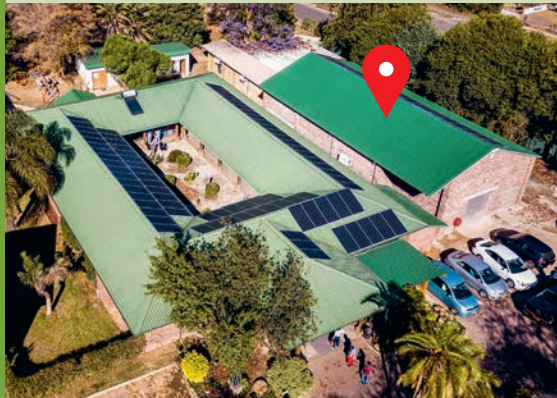
When HIV treatment is successful, viral load can no longer be detected in the blood, meaning that HIV can no longer be transmitted. At Newlands Clinic 98 % of adult patients and 93 % of adolescent patients who have been in treatment for at least six months had a suppressed viral load. In light of the UNAIDS target of 90 %, this is a great success that demonstrates the high quality of treatment and the great engagement of our staff.

### A new building for the clinic

In 2020, with financial support from the Swiss Agency for Cooperation and Development (SDC), we built a warehouse and an adolescent centre. Here young people can meet, work and present their self-made products. The warehouse provides space for drugs that have to be refrigerated and stored securely, making the work of pharmacist Tinashe Mudzviti and his team much easier. Despite delivery bottlenecks, the pharmacy team was always able to supply patients with the necessary medication. The only thing we had to suspend was the HPV vaccination programme due to delivery disruption. The vaccination is part of cancer care. We will continue the programme as soon as we can in 2021.

**3,747,874**

**pills** were stored at the end of the year in our new warehouse.



### New laser device

In 2020 we were able to acquire a modern laser device for the gentle treatment of anogenital warts and precancerous conditions that frequently occur with HIV patients. Training took place in January 2020 and the device is now in successful operation.

### Food support for families

<b>14 tonnes</b>	e'Pap porridge
<b>175 tonnes</b>	mealie meal
<b>39 tonnes</b>	sugar beans
<b>9,000 jars</b>	peanut butter
<b>10,600 litres</b>	vegetable oil



Clinic Manager Marion Mukasa-Batende and Pharmacist Tinashe Mudzviti are important pillars of Newlands Clinic.



# “At some point this storm too will be over”

The year of 2020 was dominated by the coronavirus pandemic, with work at Newlands Clinic shaped by lockdowns, precautionary measures, and growing poverty. In this interview, our clinic manager, Marion Mukasa-Batende, describes how the team is pulling together to provide the best possible care to patients.

“We do what we can. If we can put a smile on someone’s face, that’s what we do. That’s what we’re there for.”

Marion Mukasa-Batende,  
Clinic Manager

**The coronavirus has turned the world upside-down. In mid-March 2020, life in Switzerland suddenly came to a standstill. How was it in Zimbabwe?**

Things really heated up at the end of March when the government declared a lockdown. We immediately contacted the entire team via WhatsApp. Over the weekend we had to ask as many patients as possible to come to the clinic so we could supply them with HIV drugs. At that point, it wasn’t clear at all whether they’d be able to even come to the clinic after that.

**Where did it go from there?**

The clinic remained functional with two teams alternating on a weekly basis. Some activities, like dental health or group therapies were put on hold. We however provided counselling and

followed up patients through phone calls and the use of social media platforms such as WhatsApp. Patients requiring medicines or food and those with acute problems came to the clinic. We resorted to using one entrance where Covid-19 screening was done, temperature was taken, and hands were sanitized for everyone entering the clinic. Anyone with suspected Covid-19 symptoms was seen by a doctor and referred for testing and further management to the responsible public health institutions.

**Has the coronavirus pandemic affected Newlands Clinic badly?**

As the number of cases of local transmission increased, so did the anxiety amongst staff. We were constantly reminding each other to observe the Covid-19 restrictions and encour-

aging patients to also protect themselves at home. Among the Newlands Clinic staff, ten individuals were diagnosed, two had moderate symptoms. All the infections were acquired outside of the workplace, and everyone is back at work and healthy. Social distancing, mask-wearing and hand sanitisation were adhered to by all the staff.

**How has the situation affected treatment?**

Some patients did have difficulties accessing the clinic and we sent photos of their appointment slips to them and they utilised their national OI/ART cards to pass through the roadblocks.

The Women’s Health Centre was closed in April 2020, and for a time we had to discontinue home visits. We call patients who miss their appointments to find out the reason for >



“My life has changed completely. Now I provide for the up-keep of my family. I’m a businesswoman.”

“We see how passionate Prof is, about what he does, and we have caught on to that and now we share this with other people. He shows the importance and true meaning of compassion.”

Clinic Manager Marion Mukasa-Batende on Ruedi Lüthy

Our patient Joline took part in the Women’s Economic Empowerment Project. After a basic course in managing a business, she acquired a sewing machine. She now makes clothes and sells them at a small stall.



missing and to check whether they’re getting enough to eat and have the drugs they need. If a member of the team lives close to one of the patients facing challenges to come to the clinic, the staff assists by dropping off items.

**Even without the coronavirus pandemic, there’s great poverty in Zimbabwe. How are people coping?**

The economic situation is very tough. People find ways and means to fend for their families even in the lockdown. Staying at home and not having a meal on the table for the children is very difficult. Patients seen at the clinic are fortunate that they can get nutritional support. Someone said to me: “If I get Covid-19 I could die. But if I stay at home I’ll die of starvation.” That’s a fairly accurate description of many people’s situation.

**To what extent can projects like the vocational skills training programme and group therapy still be held?**

It’s been difficult. Unfortunately, we had to stop the group therapy sessions for people such as young mothers and young people and adherence groups. To make up for this we offered as much support as we could per phone. To some extent, we’ve also had to put the vocational skills training programme on hold. But despite everything, last year we were able to launch our Women’s Economic Empowerment Project to help female patients build a livelihood.

**How is the team doing?**

The pandemic affects us all. But we’re relatively privileged: we’re able to go to work and support each other, and we get wages, masks,

protective clothing and are enabled to live our daily lives. I can simply say we should pass on some positivity to our patients. We want to give them as much security and stability as possible.

**Ruedi Lüthy hasn’t been able to come to the clinic for over a year. How’s that affecting people?**

We miss him very much. We’ve learned so much from Prof, as we call him. We see how passionate Prof is, about what he does, and we have caught on to that and now we share this with other people. He shows the importance and true meaning of compassion. Through Prof’s humbleness, we have learnt that everyone is important. ■

➤ **Successful pilot project**

Newlands Clinic offers a Women’s Economic Empowerment Project to help seriously vulnerable female HIV patients get a simple business going. These women live in great poverty and are often victims of violence from their partners. In 2020 we were able to give 16 female patients new prospects. We want to continue offering and developing the project this year.

# Innovative course formats for greater flexibility

Hardest hit by the effects of the coronavirus pandemic was our Newlands Clinic Training Centre, which was unable to hold courses on site from March to October. Instead, Newlands Clinic stepped up decentralised training in the provinces.

Lockdowns, precautionary measures, and staff strikes at public clinics meant that fewer courses could be held than planned in 2020. A total of 685 doctors and nurses took part in a training or continuing medical education course. That's 70 fewer than planned.

### More decentralised course and online teaching

The two-week HIV Management Course held at Newlands Clinic Training Centre was particularly hard hit. Having trained 64 people up to March, the team had to put the course on hold. Another 133 doctors were trained on site in a specialised one-week course. The cross-regional course for experts from neighbouring countries in the Southern African Development Community (SADC) could also not take place because of travel restrictions.

Newlands Clinic increasingly opted for decentralised training in the provinces and districts, as well as online teaching. A total of 488 people attended a special customised decentralised training or online sessions for continuing medical education.

### Increase in costs per person

Given the precautionary measures, the groups were smaller than usual, which increased the costs per person. At the same time, however, it was also possible to save costs. Since fewer courses were held on premises, clinic staff were less stretched and fewer outside lecturers were hired.

Covid-19 means that the offering of on-site courses is likely to be reduced in 2021 as well. Going forward Newlands Clinic Training Centre plans to further step up decentralised



“The pandemic has been extremely demanding for the entire clinic team. But it has also showed how flexibly and creatively we’re able to respond to challenges. That’s reason to look to the future with confidence.”

Country Director Matthias Widmaier with Pharmacist Tinashe Mudzviti

training and online training to remain relevant and flexible. If the situation allows, on site courses will also be offered again. ■

Number of course participants	2020
Two-week HIV Management Course for nurses (on-site)	64
One-week HIV Management Course for doctors (on-site)	133
District level one-week HIV Management (decentralised / 5 days)	60
Continuing Medical Education (decentralised / various 1 – 8 day courses)	304
Online Training (1 day)	124
<b>Total</b>	<b>685</b>

# Modern lab equipment facilitates diagnosis

As well as making an important contribution to the quality of treatment, Newlands Clinic's well-equipped laboratory is also a reliable source of data for research into HIV/Aids and associated diseases.

In 2020 lab manager Tinei Shamu was able to further expand diagnostic capabilities. For example, the lab at Newlands Clinic now has a modern iSeq100 sequencer, which the team can use to determine resistance patterns of HI viruses to antiretroviral drugs based on blood samples. This is an important factor in the success of treatment, as it allows the therapy to be adjusted accordingly. Newlands Clinic now also has a microbiology lab for urine cultures. During the year it was also possible to acquire a Bio-Rad Cycler, which is used for HPV diagnostics and SARS-CoV-2 tests and is recommended by the WHO. Because of great demand all over the world, the device didn't arrive in Harare until the beginning of 2021. It has since been put into operation by the lab team. It is the only one of its kind in Zimbabwe.

## Long-term research continued

Despite the pandemic, Newlands Clinic was also able to take part in local, regional, and international research activities in 2020. These

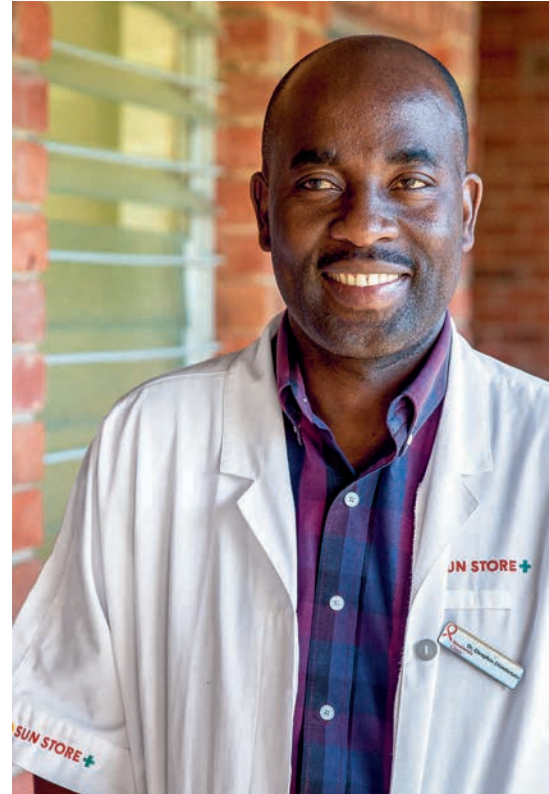
studies were presented at two major international conferences and appeared in various specialist publications.

The following constituted the clinic's major research activities for 2020:

- Long-term study: International Epidemiologic Databases to Evaluate AIDS (IeDEA)
- The Burden of Non-Communicable Diseases in Zambia and Zimbabwe (cooperation with researchers from Zambia and the University of Bern)
- Cervical cancer care cascade at Newlands Clinic (cooperation with the University of Bern)
- Mental health Impact of the Covid-19 pandemic
- Viral evolution patterns in patients receiving Dolutegravir based second- and third-line antiretroviral therapy (dissertation by Tinei Shamu)
- A facility-based survey of cervical cancer prevention and control programmes in sub-Saharan Africa using the WHO toolkit



> **Scientific Publications**  
You will find publications on the Newlands Clinic website.



**Congratulations!**  
Dr. Cleophas Chimbete, our Director of Research and Training, has defended his PhD summa cum laude – with merit distinction – at the Global Health Institute at the University of Geneva. His dissertation deals with the development of resistances in HIV treatment in Zimbabwe.

## Foundation bodies

**Board of Trustees:** Ulrich B. Mayer, Attorney, Zurich (President) | Prof. em. Hans Lutz, Rüdlingen (Vice-President) | Martin Fuhrer, former Head of International Cooperation at the Swiss Red Cross, Bern | Prof. em. Ruedi Lüthy, Harare/Zimbabwe, Muntelier | Gregor Neidhart, certified expert in accounting and controlling, Winterthur | Beat Wagner, former Head of Communications at the Swiss Red Cross, Zurich

**Executive Management:** Sabine Lüthy, Chief Executive | Harald Henggi, Deputy Chief Executive  
**Newlands Clinic Directorate:** Dr. Cleophas Chimbete, Director Training and Research | Dr. Margaret Pascoe, Medical Director Clinical Affairs | Matthias Widmaier, Country Director | PD Dr. med. Stefan Zimmerli, Medical Coordinator

**Scientific Advisory Council:** Prof. Hansjakob Furrer, Physician in Chief and Director, Department of Infectious Diseases, Bern University Hospital | Prof. Huldrych Günthard, Deputy Director, Department of Infectious Diseases and Hospital Epidemiology, University Hospital Zurich | Prof. em. Bernard Hirschel, Chairman of the Cantonal Ethics Committee, Geneva | Prof. Christoph Rudin, Head of Nephrology and Paediatrics, University Children's Hospital, Basel | Prof. em. Jörg Schüpbach, former Director of the Swiss National Centre for Retroviruses, University of Zurich  
**Patronage Committee:**

Ruth Aeschbacher, publisher, speaker, former SRF television presenter and journalist, Zurich | Ruth Dreifuss, former Federal Councillor, Geneva | Prof. em. Felix Gutzwiller, former Director of the Institute of Social and Preventive Medicine, University of Zurich | Patrick Rohr, communications consultant, photographer and journalist, Zurich/Amsterdam | Marcel Stutz, former Swiss Ambassador | Prof. em. Martin Täuber, former Rector of the University of Bern | Prof. Alexandra Trkola, Head of the Institute of Medical Virology, University of Zurich



**Our partners**

# Our heartfelt thanks!

Our project partners and generous contributions from our many donors are what makes the treatment of HIV/Aids in Zimbabwe possible. Thank you all from the bottom of our hearts!

Special thanks go to the following institutions:

- Apotheke zum Rebstock AG
- Bernhart-Matter-Stiftung
- Swiss Agency for Cooperation and Development (SDC)
- Dr. Rau Stiftung
- Einwohnergemeinde Baar
- Elisabeth Nothmann Stiftung
- Fondation Hubert Looser
- Zimbabwe Ministry of Health and Child Care
- Hans-Eggenberger-Stiftung
- ISPM University of Bern
- Catholic Parish of Ebikon
- Leopold Bachmann-Stiftung
- Lotte und Adolf Hotz-Sprenger Stiftung
- LUKAS HUNI AG
- MediService AG
- NatPharm
- Edwin and Rita Kilcher
- Rotary Club Oerlikon
- Schmid Unternehmerstiftung
- Schroder Stiftung
- Stiftung Bernhard Kunder
- Stiftung des Rotary Club Bern Bubenberg
- Tschikali Stiftung
- University of Bern
- University Hospital Bern
- Vrenjo-Stiftung



Dentacare a dental hygiene practice in Switzerland donated boxes full of toothbrushes and toothpaste: an important contribution to the work of the dental department at Newlands Clinic. Our heartfelt thanks!



Given that they couldn't hold their end-of-year party, the kids in Years 4 and 5 in Ried bei Kerzers donated the contents of their class kitty. Sabine Lüthy went to visit and was astounded at their philosophical questions. Our heartfelt thanks!



In addition to a personal donation from staff, MediService gave us medical equipment in mint condition. The blood pressure monitors, pedometers, and bathroom scales are used extensively by Newlands Clinic. Our heartfelt thanks!



Despite bottlenecks, the charity action medeor provided us with face masks and other protective equipment, plus a generous donation of needles and syringes. Our heartfelt thanks!



Every day in December, Pink on Ice Princess published a Christmas message. Drag queens, celebrities, and activists collected donations for Checkpoint Zurich and us. Our heartfelt thanks! (Photo: tibits/Pascal Triponez)



In December Dr. Massimo Migani, Director of the Secours Dentaire International clinic in Mutoko, brought us dental consumables. Our dental department was very glad to receive this generous donation. Our heartfelt thanks!

# Thanks to prudence and flexibility also successful during the Covid-19 crisis

Thanks to the support of our loyal donors and prudent planning, we closed the 2020 financial year with a profit of CHF 0.9 million. Around 90 per cent of total expenses flowed directly into aid projects, reflecting even more efficient use of resources than in 2019.

After an extraordinary 2019 with a high level of income from legacies (total income CHF 21 million), 2020 also saw gratifying income of CHF 7.1 million despite the Covid-19 pandemic. CHF 2.3 million of this stemmed from ordinary donations (versus CHF 2.4 million in 2019). This good result was only possible thanks to the great loyalty of our donors, on whom we were again able to count during this difficult year. At around CHF 840,000, earmarked donations saw a year-on-year increase of 16 %, while donations in kind declined 17 % to around CHF 1.6 million.

The Swiss Agency for Cooperation and Development (SDC) provided Newlands Clinic

with CHF 2.1 million in funding – CHF 1.8 million from the funding agreement, CHF 72,000 for the additional food aid project, and a final payment of CHF 240,000 for the period from 2016 to 2019. The SDC will be providing the foundation with funding of CHF 6.98 million for the period from 2020 to 2023. Food aid funding (2018 – 21) comes to CHF 240,000.

### More efficient use of resources

At CHF 6.5 million, total expenses were 8 % lower than the prior year. CHF 5.8 million or 90 % flowed directly into projects (compared with 88 % in 2019). Newlands Clinic accounted for CHF 5 million (-6 %), the Training Centre CHF 522,000 (-8 %) and the Women's Health Centre CHF 326,000 (-6 %). The main reason for the decline in project expenses was the Covid-19 pandemic, which resulted among other things in fewer courses and volatile procurement prices with the dollar exchange rate developing favourably.

### Slight decline in general expenses

Administration, fundraising and communications expenses could be reduced 22 % to CHF 674,000, which is 10 % of total expenses (versus 12 % in 2019). Administration expenses

amounted to around CHF 455,000 (down 10 %), with fundraising and communications expenses declining to around CHF 219,000 (down 39 %).

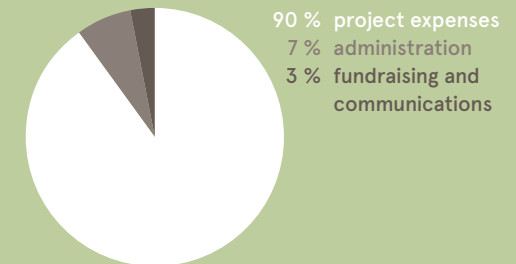
### Balance sheet and annual profit

The income surplus increased current assets to CHF 24.6 million (+1 %), CHF 15.2 million of which came from securities. Organisational capital totals CHF 24.3 million and designated capital CHF 18 million. The HIV treatment which patients need their whole life long can thus be assured over the longer term. Inventories of drugs remained stable.

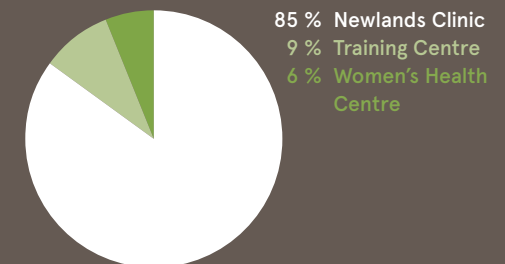
The profit and loss statement closed with an income surplus of around CHF 650,000. A positive development in financial earnings resulted in a profit before capital allocation of around CHF 1.1 million. Annual profit after capital allocation to increase fluctuation reserves came to CHF 871,000. >

The foundation was set up in 2003 with the purpose of providing comprehensive treatment and support to destitute people with HIV/Aids in southern Africa. To this purpose the foundation can run clinics and train doctors and nurses. The foundation does not pursue any economic purposes, and does not seek to make a profit.

Breakdown of total expenditures



Breakdown of project expenditures



### Financial statements for Zimbabwe

The local Ruedi Lüthy Foundation organisation ensures the smooth running of Newlands Clinic, while the Ruedi Lüthy Foundation provides the necessary funding. The accounts of Ruedi Lüthy Foundation Zimbabwe, the Training Centre and the Women's Health Centre were audited by Grant Thornton in Harare, and have been consolidated in the present financial statements.

### Organisation and remuneration

The members of the Board of Trustees (see page 15) work in an honorary capacity and are elected for a term of four years; repeated re-election is permitted. They are responsible for the strategic management of the foundation and for managing the assets. The salaries and fees of the CEO and Deputy CEO totalled around CHF 175,000, including employer contributions. Around CHF 77,000 of this fell to project expenses and CHF 98,000 to general expenses.

### Outlook

Given the unstable situation in Zimbabwe and the pandemic, it is again difficult to predict how costs will develop in 2021. The Newlands Clinic team is doing everything in its power to keep operations going in this difficult situation and provide patients with security; this requires a great deal of flexibility. On the income side we hope to be able to continue relying on our community of loyal donors. ■



"I've been deeply moved by the great solidarity our donors continue to show in what are very difficult circumstances for us all. I would like to express heartfelt thanks on behalf of the entire Board of Trustees. I will continue to work to ensure that these funds are deployed efficiently and systematically."

Gregor Neidhart, Member of the Board of Trustees, Finance

### Report of the Statutory Auditor on the Limited Statutory

to the Board of Trustees of

Ruedi Lüthy Foundation, Bern

As statutory auditors, we have examined the financial statements of Ruedi Lüthy Foundation, which comprise the balance sheet, income statement, cash flow statement, statement of changes in equity and notes for the year ended 31 December 2020. As permitted by Swiss GAAP FER 21 the information in the performance report is not required to be subject to the statutory auditors' examination.

These financial statements in accordance with Swiss GAAP FER 21 are the responsibility of the board of trustees. Our responsibility is to perform a limited statutory examination on these financial statements. We confirm that we meet the licensing and independence requirements as stipulated by Swiss law.

We conducted our examination in accordance with the Swiss Standard on the Limited Statutory Examination. This standard requires that we plan and perform a limited statutory examination to identify material misstatements in the financial statements. A limited statutory examination consists primarily of inquiries of personnel and analytical procedures as well as detailed tests of foundation documents as considered appropriate in the circumstances. However, the testing of operational processes and the internal control system, as well as inquiries and further testing procedures to detect fraud or other legal violations, are not within the scope of this examination.

Based on our limited statutory examination, nothing has come to our attention that causes us to believe that the financial statements do not give a true and fair view of the financial position, the results of operations and the cash flows in accordance with Swiss GAAP FER 21. Furthermore, nothing has come to our attention that causes us to believe that the financial statements do not comply with Swiss law, the foundation's deed and regulations.

Zurich, 17 March 2021

Yours sincerely

LIENHARD Audit AG

Claudio Piubel  
Licensed Audit Expert  
Auditor in Charge

Stephan Lienhard  
Licensed Audit Expert

Enclosure:

- Financial statements 2020 (balance sheet, income statement, cash flow statement, statement of changes in equity and notes)

## Income statement

	2020	2019
	CHF	CHF
<b>Income</b>		
<b>Donations</b>	<b>4,962,206</b>	<b>19,728,693</b>
– Ordinary donations	2,301,663	2,352,866
– Donations from legacies	198,460	14,685,430
– Earmarked donations	840,040	727,280
– Donations in kind	1,622,043	1,963,117
<b>SDC contributions</b>	<b>2,112,000</b>	<b>820,000</b>
<b>Income from the Training Centre</b>	<b>322</b>	<b>23,978</b>
<b>Other income</b>	<b>58,760</b>	<b>205,154</b>
<b>Total income</b>	<b>7,133,288</b>	<b>20,777,825</b>
<b>Expenses</b>		
<b>Project expenses Harare</b>		
<b>Newlands Clinic</b>	<b>4,957,053</b>	<b>5,257,117</b>
– Personnel expense	1,787,478	1,867,998
– Medication and medical costs	2,665,698	2,858,855
– Infrastructure and vehicles	369,444	384,368
– Various project costs	134,433	145,896
<b>Training Centre</b>	<b>522,488</b>	<b>569,861</b>
<b>Women's Health Centre</b>	<b>325,817</b>	<b>346,950</b>
<b>Total project expenses Harare</b>	<b>5,805,358</b>	<b>6,173,928</b>
<b>General expenses</b>		
Administration	454,848	503,196
Fundraising and communications	219,262	356,608
<b>Total general expenses</b>	<b>674,110</b>	<b>859,804</b>
<b>Total expenses</b>	<b>6,479,468</b>	<b>7,033,732</b>
<b>Operating income</b>	<b>653,820</b>	<b>13,744,093</b>
<b>Financial income</b>	<b>488,237</b>	<b>265,458</b>
<b>Annual profit or loss before capital allocation</b>	<b>1,142,057</b>	<b>14,009,551</b>
Withdrawal from designated capital	28,692	18,785
Allocation to designated capital	–300,000	–10,850,000
<b>Annual profit or loss after capital allocation</b>	<b>870,749</b>	<b>3,178,336</b>

## Balance sheet

	2020	2019
	CHF	CHF
<b>Assets</b>		
Cash, post office account, bank deposits	8,482,202	8,761,312
Securities	15,194,090	14,764,847
Receivables from goods & services and accrued income & prepaid expenses	147,210	115,031
Inventories	817,098	790,421
<b>Total assets</b>	<b>24,640,600</b>	<b>24,431,611</b>
<b>Liabilities</b>		
<b>Short-term liabilities</b>		
Payables from goods & services and accrued expenses and deferred income	355,081	1,202,423
<b>Total current liabilities</b>	<b>355,081</b>	<b>1,202,423</b>
<b>Organisational capital</b>		
Paid-in capital of the foundation	100,000	100,000
Designated capital	17,947,419	17,976,111
– Training Centre	2,000,000	2,000,000
– New projects	2,000,000	2,000,000
– Newlands Clinic	11,572,000	11,572,000
– Staff quarters	375,419	404,111
– Women's Health Centre	2,000,000	2,000,000
Reserve for fluctuations in asset value	1,800,000	1,500,000
Unrestricted capital	3,567,351	474,741
Net profit or loss for the period	870,749	3,178,336
<b>Total organisational capital</b>	<b>24,285,519</b>	<b>23,229,189</b>
<b>Total liabilities</b>	<b>24,640,600</b>	<b>24,431,611</b>

Lienhard Audit AG in Zurich serves as the foundation's auditors. The supervisory authority is the Federal Supervisory Board for Foundations (FSBF).

The financial statements were prepared in accordance with the accounting and reporting recommendations for non-profit organisations (Swiss GAAP FER 21) and comply with the ZEW0 requirements.



The complete financial statements, comprising the balance sheet, income statement, cash flow statement, statement of net increase/decrease in organisational capital and notes can be viewed at [www.ruedi-luethy-foundation.ch/publications](http://www.ruedi-luethy-foundation.ch/publications)

Ruedi Lüthy Foundation  
Falkenplatz 9 CH-3012 Bern  
Phone +41 31 302 05 65

[info@rl-foundation.ch](mailto:info@rl-foundation.ch)  
[www.ruedi-luethy-foundation.ch](http://www.ruedi-luethy-foundation.ch)  
IBAN CH60 0900 0000 8770 0710 6

Follow us on



© Ruedi Lüthy Foundation 2021

Editing: Ruedi Lüthy Foundation, Janine Haas Text und Übersetzung; Translation: Michael Craig Communications;  
Graphic design: Albanese Grafik; Photography: Andrew Philip, Simon Huber, Patrick Rohr, Mkhululi Thobela;  
Cover image: Marlon Mukasa-Batende, Clinic Managerin at Newlands Clinic